

# SYNERGIE **HR** | People Excellence & Productivity

Enabling sustainable transformation through  
**human development interventions**

CORPORATE PITCH DECK



# Who We Are

SYNERGIE HR is a Learning & Development and HR Consulting firm dedicated to helping individuals and organizations evolve.

We design and deliver high-impact interventions based on behavioral science and experiential learning. Our work bridges the gap between knowledge and behavior — enabling sustainable transformation at the individual, team, and organizational level.



# What we offer





# Our Methodology



## 1. Diagnose

Understand needs through assessments, interviews, surveys



## 2. Design

Co-create contextual, learner-centered programs



## 3. Deliver

Facilitate using experiential, blended, and coaching-based formats



## 4. Demonstrate

Evaluate results and support post-program sustainment

## Organization-Level Interventions

# Our Services



- ❑ Change Leadership & Change Readiness
- ❑ Strategic Foresight & Future-Readiness
- ❑ Diversity, Equity & Inclusion (DEI) Strategy Execution
- ❑ Leading Innovation & Driving Agility
- ❑ Systems Thinking for Complex Problem Solving
- ❑ Organizational Culture Transformation

## Team-Level Interventions

- ❑ High-Performing Teams Development
- ❑ Psychological Safety & Trust Building
- ❑ Inclusive Leadership & Bias Awareness
- ❑ Team Coaching & Facilitation Skills
- ❑ Conflict Resolution & Constructive Dialogue
- ❑ Collaboration Across Silos & Functions
- ❑ Empowerment & Delegation Practices
- ❑ Cross-Cultural Team Effectiveness

## Individual-Level Interventions

- ❑ Executive & Leadership Coaching
- ❑ Personal Purpose & Values Alignment
- ❑ Emotional Intelligence Development
- ❑ Influence & Communication Skills
- ❑ Strategic Thinking & Decision Making
- ❑ Managing Ambiguity & Complexity

# Signature Programs



Our signature interventions include:

## LEAP

- Leadership Enhancement for Aspiring Professionals

## NAVIGATE

- Managerial Capability Accelerator

## IMPACT

- Executive Presence & Influence

## THRIVE

- Emotional Wellness & Resilience Series

## TEAM SYNERGY

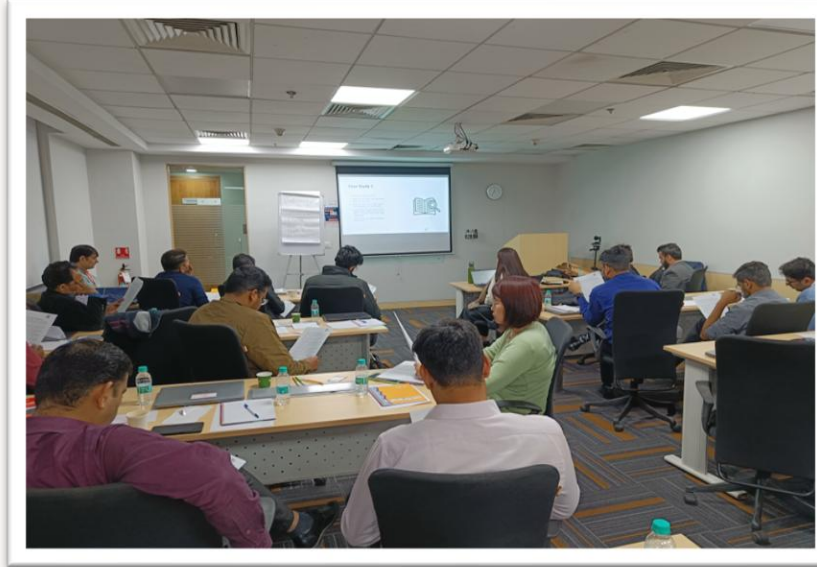
- High-Performance Teaming



# Program Snapshots



MDP on Neuroleadership



Solution-Oriented Leadership



Team Building Offsite



Residential Leadership Development Workshop



NLP, Stress Management & Mental Wellness Retreat



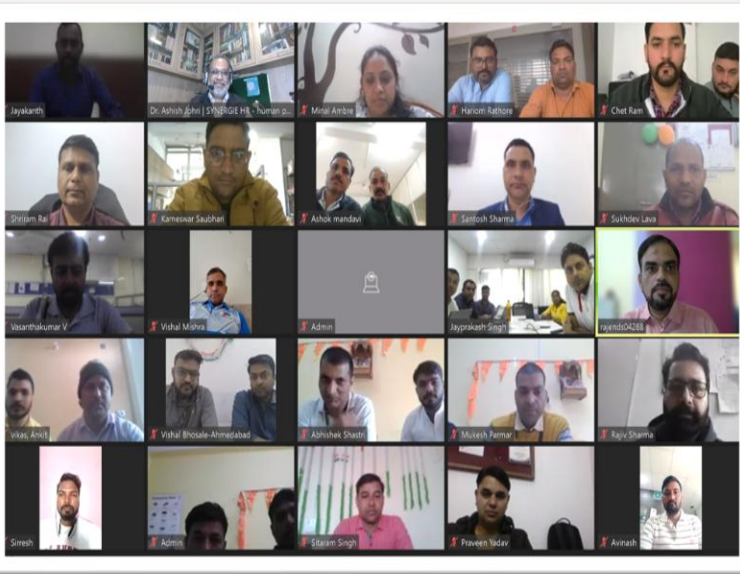
# Program Snapshots



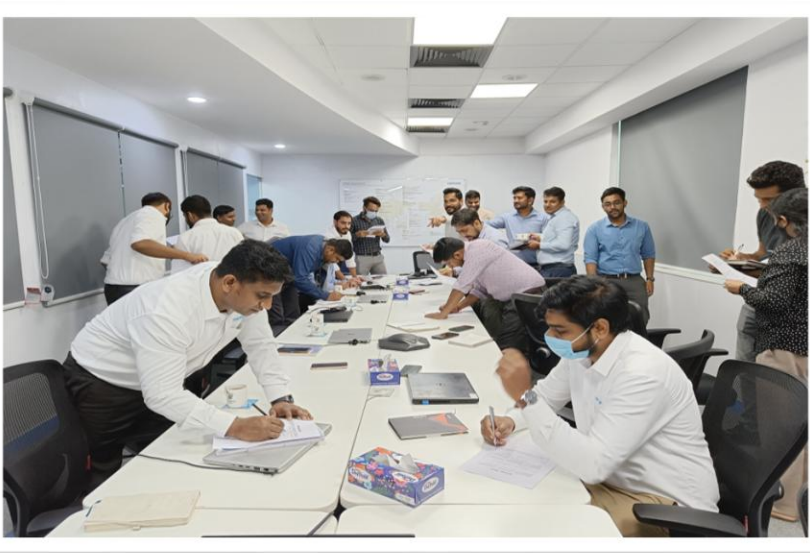
Outbound Team Building



Collaboration Skills Training



Customer Orientation Training | VILT Program



First Time Manager Training



Effective Decision Making Training



# Program Snapshots



Presentation Skills Training



Change Management Simulation Training



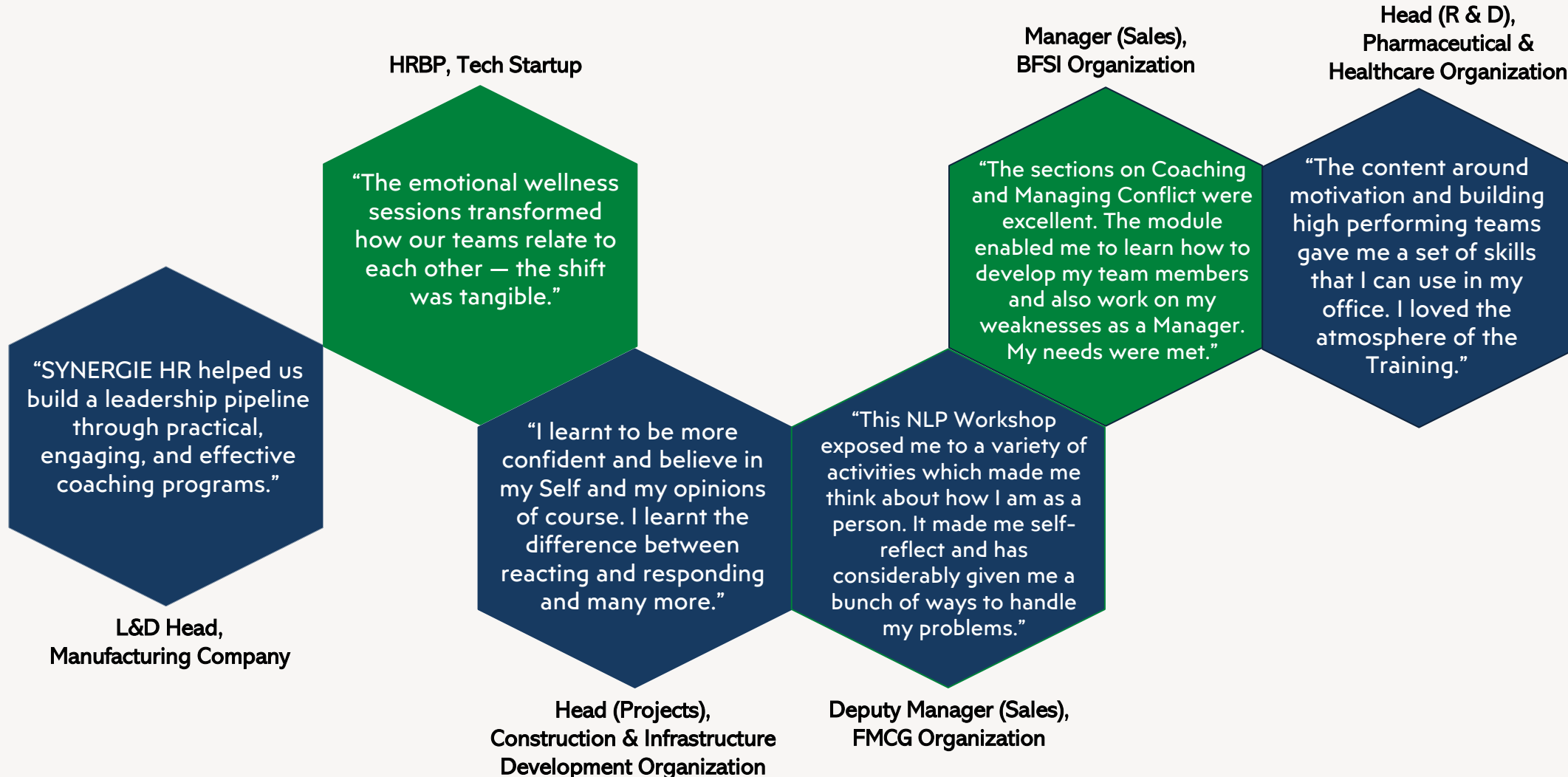
Effective Problem - Solving Training



Business Communication Training



Conflict Resolution Training





# Sectoral Presence

## Manufacturing

- \*RICO
- \*L & S Cables
- \*Sysmex
- \*Continental Carbon
- \*BK Tires
- \*Idemitsu Lubes Pvt Ltd
- \*Horiba
- \*D.light
- \*Udaipur Cement Works Ltd.
- \*Shree Cement
- \*Galaxy Surfactants
- \*Wuerth
- \*Mettler-Toledo

## IT & ITES

- \*Srijan
- \*Login Radius
- \*Field Assist
- \*Incedo
- \*Evolute Systems
- \*Global Data

## Construction & Infrastructure Development

- \*Larsen & Toubro - WET IC

## Consulting

- \*Ernst & Young
- \*RMSI

## Government

- \*HCM Rajasthan Institute of Public Administration
- \*Indian Institute Of Public Administration
- \*Himachal Pradesh Institute of Public Administration
- \*RST Uttarakhand Academy of Administration
- \*UGC Human Resource Development Centre
- \*Institute Of Cooperative Management
- \*Government Of Tibet

## PSU

- \*Engineers India Ltd.
- \*Gas Authority of India Ltd.
- \*Numaligarh Refinery Ltd.
- \*National Lignite Corporation Of India Ltd.

## Higher Education

- \*BMS College of Engineering
- \*SKB College of Pharmacy
- \*NIFTEM
- \*NIT Kurukshetra
- \*Association of Pharmacy Teachers of India
- \*NIT Mizoram
- \*Manipur Technical University
- \*Sridora College of Accounts & Management, Goa

## BFSI

- \*Deutsche Bank
- \*Hero FinCorp
- \*Reliance Capital
- \*HDFC Bank
- \*Reserve Bank Of India
- \*Metlife
- \*Renewbuy

## Mining

- \*Adani Coals & Mines

## Healthcare & Pharmaceuticals

- \*Cipla
- \*Alcon

## Education Management

- \*Doon School

## Development (NGOs)

- \*PANI Sansthan
- \*Miracle Foundation

## SCM, Warehousing & Logistics

- \*National Bulk Handling Corporation



# Profile of Lead Faculty

## Education



Dr. Ashish Johri

[www.linkedin.com/in/johriashish](https://www.linkedin.com/in/johriashish)

- Graduate in Medicine.
- Ph.D. in Business Management (Authentic Leadership)
- International Certifications in NLP & Emotional Intelligence



## Professional Snapshot

- Experienced people development and capability building professional working with Corporate, Government & Non-Government sectors.
- Demonstrated ability to apply behavioral science research to maximize human potential at an individual, team and organizational level
- A co-author, a Professor, a Training Consultant with 22+ years of experience working at the intersection of management education and practice.
- Behavioral Training Interventions conducted for clients from IT, Telecommunication, Infrastructure Development, Manufacturing, Banking & Finance, Not for Profit, Automobile, Health & Pharma, Power etc. sectors
- Senior Consultant cum Advisor of Soft Skills for Sunstone Eduversity – a leading Ed Tech start-up.

## Contact



- +91-9928070078

## Email



- [ashish.j@synergiehr.com](mailto:ashish.j@synergiehr.com)

## Personal Profile



- Principal Consultant - SYNERGIE HR | People Excellence & Productivity
- Professor in Management (HR)





## Contact Us

Let's partner to develop people  
and performance !

### Corporate Office:

HD-783, WeWork DLF Forum,  
Cyber City, Phase - III,  
Gurugram, Haryana, PIN -122002

**E-mail:** [info@synergiehr.com](mailto:info@synergiehr.com)

**Website:** [www.synergiehr.com](http://www.synergiehr.com)

**Mobile:** +91-9928070078, 8279208354



[www.linkedin.com/company/synergiehr](http://www.linkedin.com/company/synergiehr)



[www.facebook.com/synergieHR.official](http://www.facebook.com/synergieHR.official)

Looking forward to hearing  
from you soon

**THANK YOU**

**E-mail:** [info@synergiehr.com](mailto:info@synergiehr.com)

**Website:** [www.synergiehr.com](http://www.synergiehr.com)

**Mobile:** +91-9928070078, 8279208354

